

Архангельск (8182)63-90-72  
 Астана (7172)727-132  
 Астрахань (8512)99-46-04  
 Барнаул (3852)73-04-60  
 Белгород (4722)40-23-64  
 Брянск (4832)59-03-52  
 Владивосток (423)249-28-31  
 Волгоград (844)278-03-48  
 Вологда (8172)26-41-59  
 Воронеж (473)204-51-73  
 Екатеринбург (343)384-55-89  
 Иваново (4932)77-34-06

Ижевск (3412)26-03-58  
 Иркутск (395)279-98-46  
 Казань (843)206-01-48  
 Калининград (4012)72-03-81  
 Калуга (4842)92-23-67  
 Кемерово (3842)65-04-62  
 Киров (8332)68-02-04  
 Краснодар (861)203-40-90  
 Красноярск (391)204-63-61  
 Курск (4712)77-13-04  
 Липецк (4742)52-20-81  
 Киргизия (996)312-96-26-47

Магнитогорск (3519)55-03-13  
 Москва (495)268-04-70  
 Мурманск (8152)59-64-93  
 Набережные Челны (8552)20-53-41  
 Нижний Новгород (831)429-08-12  
 Новокузнецк (3843)20-46-81  
 Новосибирск (383)227-86-73  
 Омск (3812)21-46-40  
 Орел (4862)44-53-42  
 Оренбург (3532)37-68-04  
 Пенза (8412)22-31-16  
 Казахстан (772)734-952-31

Пермь (342)205-81-47  
 Ростов-на-Дону (863)308-18-15  
 Рязань (4912)46-61-64  
 Самара (846)206-03-16  
 Санкт-Петербург (812)309-46-40  
 Саратов (845)249-38-78  
 Севастополь (8692)22-31-93  
 Симферополь (3652)67-13-56  
 Смоленск (4812)29-41-54  
 Сочи (862)225-72-31  
 Ставрополь (8652)20-65-13  
 Таджикистан (992)427-82-92-69

Сургут (3462)77-98-35  
 Тверь (4822)63-31-35  
 Томск (3822)98-41-53  
 Тула (4872)74-02-29  
 Тюмень (3452)66-21-18  
 Ульяновск (8422)24-23-59  
 Уфа (347)229-48-12  
 Хабаровск (4212)92-98-04  
 Челябинск (351)202-03-61  
 Череповец (8202)49-02-64  
 Ярославль (4852)69-52-93

<https://fluidwell.nt-rt.ru/> || [fwt@nt-rt.ru](mailto:fwt@nt-rt.ru)

# B SERIES

Your success counts



## Basic Field Mount Indicators

nothing more, nothing less



Application examples: Common flow monitoring



Battery powered flow indication



Your brand customization

The basic indicators of the B-Series have all the benefits you may expect from a Fluidwell product: It's durable, reliable and very easy to operate. For more advanced functionality we recommend our D-, E-, F- and N-Series.

### Advantages

- Durable IP65 (Type4) field, wall or meter mount enclosure.
- Intuitive "Know one, know them all!" configuration menu, saving time, cost and aggravation.
- Compact design.
- Competitive pricing in bigger quantities.
- Design your own branded product with several enclosure customization options.

### Features

- One 20mm and two 16mm knock-out hole cable entries.
- All info at a glance with clear alphanumeric display.
- Displays alarm values with various selectable engineering units.
- Clear 12mm(0.5") numeric and 7mm(0.3") alphanumeric digits.
- Bright LED backlight.
- The B-Series accepts the basic sensor input signals: Reed-switch, Namur, NPN, PNP, Sine wave (coil).
- Configurable pulse, alarm or control outputs.
- Loop powered, analog 4 - 20mA output.
- Auto backup of settings and running totals.
- Lithium AA battery, output loop powered and 10 - 30V DC power supply.
- Sensor supply: 8.2V DC.

# Feature overview



## B-Series product overview

Name	Functionality	Signal input	Display info	Output 1	Output 2	Battery powered	Output loop powered	Power supply 10 - 30V DC	Sensor supply 8.2V DC	Backlight
B-Basic	Flow rate indicator / Totalizer	Pulse	Flowrate / Total / Acc. Total			•		•		•
B-Alert	Flow rate Monitor / Totalizer with alarm / pulse output	Pulse	Flowrate / Total / Acc. Total / Low alarm / High alarm	Alarm/pulse	Alarm/pulse	•		•	•	•
B-Smart	Flow rate indicator / Totalizer with pulse and analog output	Pulse	Flowrate / Total / Acc. Total	Pulse	4 - 20mA	•	•	•	•	•
B-In-Contol	Batch Controller with control output	Pulse	Actual / Preset / Total / Acc. Total	Valve Control	Valve control	•		•	•	•



All info at a glance



Easy to install



Easy to program



Know one know them all!



Reliable



User-friendly

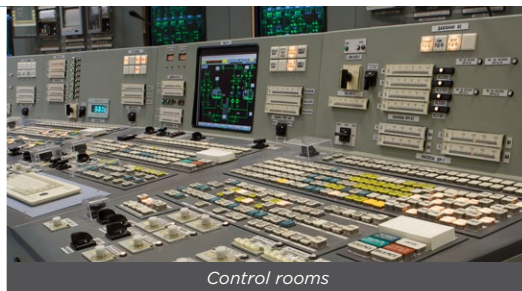
# D

# SERIES

## Panel mount Indicators withstands even powerful water jets



*Application examples: Marine applications*



*Control rooms*



*Food industry*

The D-Series is a front panel mount indicator, controller and monitoring system for measurement applications in industrial environments. It is the robust alternative for your existing, not waterproof, panel meters.

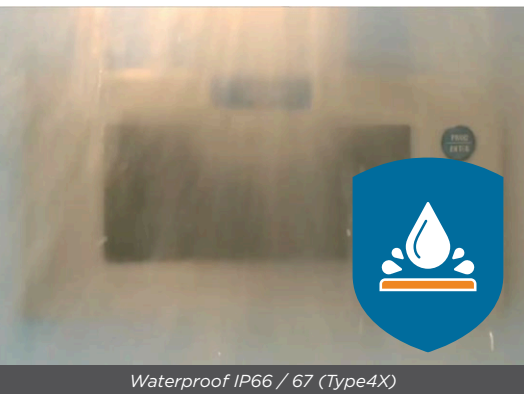
### Advantages

- Unique, robust IP66, IP67 (NEMA Type4X) panel mount front enclosure made of die cast aluminum, allowing even big jets of water and total immersion.
- Intuitive “Know one, know them all!” configuration menu, saving time, cost and aggravation.
- Resistant to harsh weather conditions: rain, snow, salty atmospheres.
- Only a few inches depth clearance for smaller, low cost panels and panel doors.

### Features

- Displays flow rate, totals, level, temperature, pressure, alarm values and percentage and with various selectable engineering units.
- 17mm(0.7”) numeric digits and 8mm(0.3”) alphanumeric digits.
- LED backlight, can be set to be red flashing in case of an alarm.
- Piegraph indication and 5 1/2 extra large 26mm (1”) numeric digits with the basic models.
- Selectable on-screen engineering units; volumetric or mass.
- Auto backup of settings and running totals.
- Ability to process all types of signals: Sine wave (coil), NAMUR, NPN/PNP pulse, Reed-switch, Active pulse signals, (O)4-20mA.
- Configurable pulse, alarm or control outputs.
- Power requirements: long life lithium battery, 8 - 30V DC, 24V AC, 110 - 230V AC or input loop powered.
- Sensor supply: 1.2 / 3 / 8.2 / 12 / 24V DC.
- Operational temperature: -40°C to +80°C (-40°F to 176°F).

# Feature overview



All info at a glance



Easy to install



Easy to program



Know one know them all!



Reliable



User-friendly

# E SERIES

## Explosion proof Flow Computers

when user-friendliness matters



*Application examples: Salty Off-Shore conditions*



*Extreme cold weather at polar regions*



*Hot and sandy deserts*

**The E-Series provides unequalled safety and ease of use, opening covers is history. The through-glass keypad enables operability without interruptions. The E-Series saves time, money and hassle and delivers user-friendliness in the toughest conditions.**

### Advantages

- Save time and gain flexibility with the easy-to-operate through glass keypad: no need to remove the front cover or to arrange a work permit.
- Intuitive "Know one, know them all!" configuration menu, saving time, cost and aggravation.
- Cost saving with an easy to install, spacious chamber, plug and play connectors and 1" NPT thread for flow meter mounting.
- Durable high grade stainless steel 316L Ex d enclosure for extremely salty atmospheres (offshore).

### Features

- Explosion proof according ATEX, IECEx, FM and CSA c-us.
- Data logging of flow rate, total and accumulated total.
- Easy configurable via PC with free downloadable software.
- Easy K-factor configuration for volumetric or mass.
- Display shows flow rate, total, acc. total, daily total, previous daily total, measuring units and a flow rate indicating speedometer.
- 7 digit flow rate / total and 11 digit accumulated total.
- Bright bi-color LED backlight.
- Ability to process all types of signals: Sine wave (coil), NAMUR, NPN/PNP pulse, Reed-switch, Active pulse signals, (0)4-20mA
- Modbus, HART or USB communication.
- Configurable pulse or alarm outputs and unscaled input retransmission.
- Analog (0)4 - 20mA output.
- Auto backup of settings and running totals.
- Power requirements: Loop powered, battery or 9 - 27V DC.
- Sensor supply: 8.2 / 12 / 24V DC.

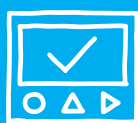
# Feature overview



All info at a glance



Easy to install



Easy to program



Know one know them all!



Reliable



User-friendly

# F

# SERIES

## Field mount Indicators

for safe and hazardous areas



*Application examples: Salty Off-Shore conditions*



*Extreme cold weather at polar regions*



*Hot and sandy deserts*

**The F-Series is your first and safest choice for field mount indicators in safe and hazardous area applications. Especially in harsh weather conditions like rain, snow, salty atmospheres and temperatures between -40°C up to +80°C (-40°F up to 176°F).**

### Advantages

- Robust aluminum or stainless steel 316L field enclosure (IP67 / NEMA Type4X). It is so rugged, a truck can even stand on it!
- Intrinsically Safe available - ATEX, IECEx, FM and CSA approval for gas and dust applications.
- Intuitive "Know one, know them all!" configuration menu, saving time, cost and aggravation.
- Very diverse mounting possibilities: walls, pipes, panels or directly onto outdoor sensors!

### Features

- Easy configuration with clear alphanumeric display.
- Displays flow rate, totals, level, temperature, pressure, percentage and alarm values with engineering units.
- Clear 17mm(0.7") numeric and 8mm(0.3") alphanumeric digits.
- LED backlight, can be set to be red flashing in case of an alarm.
- Piegraph indication and 5 1/2 extra large 26mm (1") digits.
- Auto backup of settings and running totals.
- Ability to process all types of signals: Sine wave (coil), NAMUR, NPN/PNP pulse, Reed-switch, Active pulse signals, (0)4-20mA.
- Modbus or HART communication.
- Configurable pulse, alarm or control outputs.
- Analog (0)4 - 20mA output.
- Power requirements: long life lithium battery, 8 - 24V AC/DC, 110 - 230V AC or input / output loop powered.
- Sensor supply: 1.2 / 3 / 8.2 / 12 / 24V DC.

# Feature overview



All info at a glance



Easy to install



Easy to program



Know one know them all!



Reliable



User-friendly



# N SERIES

## Batch Controllers

with easy to operate numerical keypad



*Application examples: Truck or tank filling*



*Pharmaceutical industry*



*Food industry*

The N-Series distinguishes itself by its userfriendly features: Numerical keypad, easy ticket printing, clear programming menu structure, easy to read display and simple mounting enclosure. The numerical keypad allows simple and fast changing of the preset batch quantity.

### Advantages

- Save time and cost with the easy to operate numerical keypad.
- Intuitive "Know one, know them all!" configuration menu, saving time, cost and aggravation.
- Key information at a glance as it simultaneously shows actual value, preset value, batch process indication, relay status and selectable measuring units for volumetric or mass.
- Easy operation to enter a batch value and to control the proces.

### Features

- Multiple control inputs for remote START, HOLD, RESUME, keypad lock and external alarm.
- 7 large digits (14mm, 0.56") for total, flow rate and acc. total.
- 10 smaller digits (8mm, 0.3") for preset value and batch count.
- No-flow monitoring and automatic overrun correction.
- Bright LED backlight.
- Receipt printer driver.
- Auto backup of settings and running totals.
- Ability to process all types of signals: Reed-switch, open collector, NPN/PNP pulse or active 8 / 12 / 24V pulse signals.
- Modbus communication option RS232 / RS485.
- Field replaceable, heavy duty, mechanical relays (NO-NC).
- Configurable transistor output(s).
- Power requirements: 24V DC / 110 - 230V AC.
- Sensor supply: 8.2 / 12 / 24V DC.
- NTEP available.

Архангельск (8182)63-90-72  
 Астана (7172)727-132  
 Астрахань (8512)99-46-04  
 Барнаул (3852)73-04-60  
 Белгород (4722)40-23-64  
 Брянск (4832)59-03-52  
 Владивосток (423)249-28-31  
 Волгоград (844)278-03-48  
 Вологда (8172)26-41-59  
 Воронеж (473)204-51-73  
 Екатеринбург (343)384-55-89  
 Иваново (4932)77-34-06

Ижевск (3412)26-03-58  
 Иркутск (395)279-98-46  
 Казань (843)206-01-48  
 Калининград (4012)72-03-81  
 Калуга (4842)92-23-67  
 Кемерово (3843)65-04-62  
 Киров (8332)68-02-04  
 Краснодар (861)203-40-90  
 Красноярск (391)204-63-61  
 Курск (4712)77-13-04  
 Липецк (4742)52-20-81  
 Киргизия (996)312-96-26-47

Магнитогорск (3519)55-03-13  
 Москва (495)268-04-70  
 Мурманск (8152)59-64-93  
 Набережные Челны (8552)20-53-41  
 Нижний Новгород (831)429-08-12  
 Новокузнецк (3843)20-46-81  
 Новосибирск (383)227-86-73  
 Омск (3812)21-46-40  
 Орел (4862)44-53-42  
 Оренбург (3532)37-68-04  
 Пенза (8412)22-31-16  
 Казахстан (772)734-952-31

Пермь (342)205-81-47  
 Ростов-на-Дону (863)308-18-15  
 Рязань (4912)46-61-64  
 Самара (846)206-03-16  
 Санкт-Петербург (812)309-46-40  
 Саратов (845)249-38-78  
 Севастополь (8692)22-31-93  
 Симферополь (3652)67-13-56  
 Смоленск (4812)29-41-54  
 Сочи (862)225-72-31  
 Ставрополь (8652)20-65-13  
 Таджикистан (992)427-82-92-69

Сургут (3462)77-98-35  
 Тверь (4822)63-31-35  
 Томск (3822)98-41-53  
 Тула (4872)74-02-29  
 Тюмень (3452)66-21-18  
 Ульяновск (8422)24-23-59  
 Уфа (347)229-48-12  
 Хабаровск (4212)92-98-04  
 Челябинск (351)202-03-61  
 Череповец (8202)49-02-64  
 Ярославль (4852)69-52-93

<https://fluidwell.nt-rt.ru/> || [fwt@nt-rt.ru](mailto:fwt@nt-rt.ru)

# Feature overview

Display with standard bright backlight (22 x 116mm / 0.87" x 4.57")

Measurement units

Displayed function

7 large digits (14mm, 0.56")

Easy numerical keypad

Buttons with extra functionality (rate, total, batch count or (re-)print)

Batch process indication

Status indication

Displayed function

10 digits (8mm, 0.3")

Buttons for configuration

Buttons with direct batch control functionality (START, HOLD, RESET)

Aluminum DIN front panel 144 x 72mm (5.67" x 2.83")



All info at a glance



Easy to install



Easy to program



Know one know them all!



Reliable



User-friendly